



EP EFL253 LI-ION

Capacity: 2500 kg
Mast type: Triplex
Lift height: 4800 mm
Closed height: 2220 mm
Free lift: 1560 mm
YOM: 2024
Engine type: Electric
Tech. Condition: New
Visual condition: New
Fork length: 1145 mm

Com Nr.: 4168
Front tyres: Non Marking
Front tyres Condition: 80 - 100%
Rear tyres: Non Marking
Rear tyres Condition: 80 - 100%
Battery: Lithium Ionen Batterie, 2024, 80V, 280Ah,

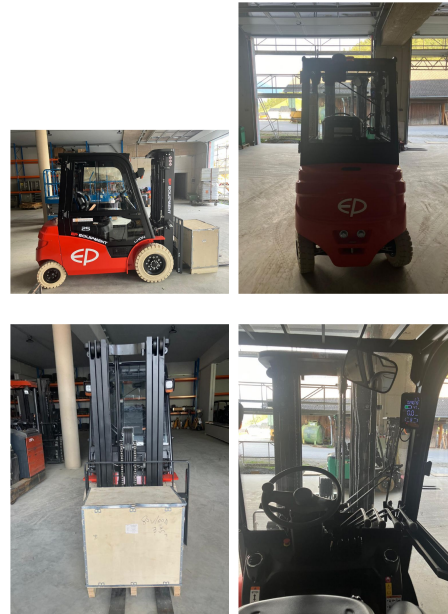
Extras:

Side Shift

Integriert

3rd valve 4th valve Worklight back Worklight front Heater Full cabin CE certificate

Symbolfoto! Abweichungen zum Originalgerät möglich.



Price: on request (Subject to prior sale)

Pfischer Staplertechnik GmbH
Gewerbepark 4a
A-6068 Mils

Fon: +43 (0) 5223 – 79069
Fax: +43 (0) 5223 – 79071
www.staplertechnik.at
info@staplertechnik.at

Geschäftsführer:
Christian Pfischer
Landgericht Innsbruck Fb-Nr. 254683i
ATU: 61228736