



## Cesab S212L

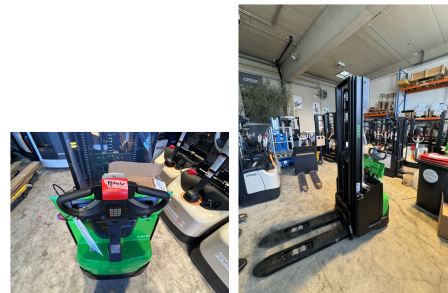
**Capacity:** 1200 kg  
**Mast type:** Triplex  
**Lift height:** 3700 mm  
**Closed height:** 1855 mm  
**YOM:** 2024  
**Engine type:** Electric  
**Tech. Condition:** New  
**Visual condition:** New  
**Fork length:** 1150 mm

**Com Nr.:** 4254  
**Front tyres:** Vulkollan  
**Rear tyres:** Polyurethane  
**Battery:** EXIDE, 2024, 24V, 225Ah,

### Extras:

Initial lift

Pin-Code Tastenfeld Fingerschutz Gitter, Proportionalsteuerung von Hub/ Senkung, Tandem Gabelrolle



**Price: on request** (Subject to prior sale)

**Pfischer Staplertechnik GmbH**  
Gewerbepark 4a  
A-6068 Mils

Fon: +43 (0) 5223 – 79069  
Fax: +43 (0) 5223 – 79071  
[www.staplertechnik.at](http://www.staplertechnik.at)  
[info@staplertechnik.at](mailto:info@staplertechnik.at)

Geschäftsführer:  
Christian Pfischer  
Landgericht Innsbruck Fb-Nr. 254683i  
ATU: 61228736