



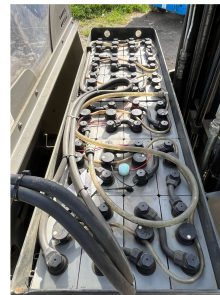
Crown ESR 5260-16

Capacity: 1600 kg
Mast type: Duplex
Lift height: 7290 mm
Closed height: 2970 mm
Free lift: 2300 mm
YOM: 2017
Engine type: Electric
Tech. Condition: good
Visual condition: good
Fork length: 1145 mm

Com Nr.: 5451
Front tyres: Vulkollan
Rear tyres: Vulkollan
Battery: 2019, 48V, 620Ah,

Extras:

Side Shift
24 V Add. Power Supply,



Price: on request (Subject to prior sale)

Pfischer Staplertechnik GmbH
Gewerbepark 4a
A-6068 Mils

Fon: +43 (0) 5223 – 79069
Fax: +43 (0) 5223 – 79071
www.staplertechnik.at
info@staplertechnik.at

Geschäftsführer:
Christian Pfischer
Landgericht Innsbruck Fb-Nr. 254683i
ATU: 61228736