



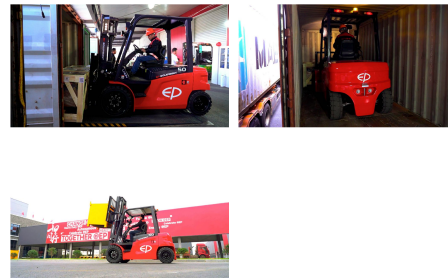
EP CPD50L1 (LI-ION)

Capacity: 5000 kg
Mast type: Triplex
Lift height: 5000 mm
Closed height: 2460 mm
Free lift: 1610 mm
YOM: 2024
Engine type: Electric
Tech. Condition: New
Visual condition: New
Fork length: 1200 mm

Com Nr.: LAGERAMPASS3
Battery: 2024, 80V, 560Ah,

Extras:

Side Shift Fork positioners 3rd valve 4th valve Heater Full cabin CE certificate
Manuelle Bedienhebel. ACHTUNG SYMBOLFOTOS. Maschine hat Vollkabine



Price: on request (Subject to prior sale)

Pfischer Staplertechnik GmbH
Gewerbepark 4a
A-6068 Mils

Fon: +43 (0) 5223 – 79069
Fax: +43 (0) 5223 – 79071
www.staplertechnik.at
info@staplertechnik.at

Geschäftsführer:
Christian Pfischer
Landgericht Innsbruck Fb-Nr. 254683i
ATU: 61228736