

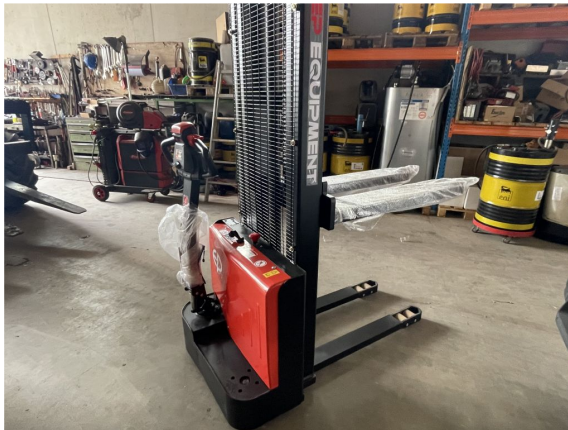


EP EST122 lithium ionen

Capacity: 1200 kg
Mast type: Duplex
Lift height: 3300 mm
Closed height: 2270 mm
YOM: 2022
Engine type: Electric
Tech. Condition: New
Visual condition: New
Fork length: 1150 mm

Com Nr.: LAGERMASCHINEN
Front tyres: Vulkollan
Rear tyres: Vulkollan
Battery: EP LI-ION, 2022, 24V,

Extras:



Price: on request (Subject to prior sale)

Pfischer Staplertechnik GmbH
Gewerbepark 4a
A-6068 Mils

Fon: +43 (0) 5223 – 79069
Fax: +43 (0) 5223 – 79071
www.staplertechnik.at
info@staplertechnik.at

Geschäftsführer:
Christian Pfischer
Landgericht Innsbruck Fb-Nr. 254683i
ATU: 61228736